



MODEL  
NUMBER

NAME

SEAT  
HEIGHT

ARM  
HEIGHT

WIDTH

DEPTH

HEIGHT

FABRIC  
YARDS

LEATHER  
SQ FT

WEIGHT/  
VOLUME

LIST  
PRICE

DESCRIPTION

FS-1-O  
FS-1-M

Fusion Chair  
Oak  
Maple

18"

17<sup>1</sup>/<sub>2</sub>"

20"

35"

N/A

N/A

\$ 665

The Fusion Chair has Steel Legs that are available in a powder coat paint finish, see page 15 for colour options. It is constructed of a laminated Oak or Maple Seat and Back with a standard Natural Clear Finish.

For the complete line of Maple Wood Finishes and options, refer to page 12 in this specification guide.



For the complete line of Red Oak Wood Finishes and options, refer to page 10 in this specification guide.



GL-1-NW  
GL-1-MR

Gilda Chair  
Nord Wool  
Mirage

19<sup>1</sup>/<sub>4</sub>"

17<sup>3</sup>/<sub>4</sub>"

20<sup>1</sup>/<sub>2</sub>"

35<sup>1</sup>/<sub>2</sub>"

0.87

14.53

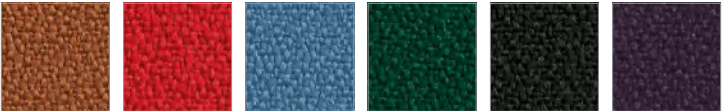
15 Lbs  
10.59 Cu Ft

\$ 360  
\$ 325

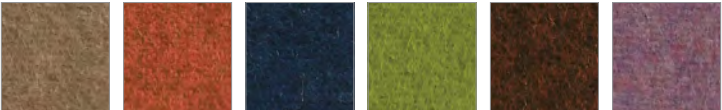
The Gilda Chair is available with either a Chrome Frame or Matt-Chrome Frame in a selection of 20 Nord Wool Fabrics; or 20 Mirage Fabrics.

The Chair is stackable.

For the complete line of Mirage Fabrics available, refer to page 8 in this specification guide.



For the complete line of Nord Wool Fabrics available, refer to page 8 in this specification guide.



GL-2-NW  
GL-2-MR

Gilda Chair with  
Matt-Chrome Frame  
Nord Wool  
Mirage

19<sup>1</sup>/<sub>4</sub>"

17<sup>3</sup>/<sub>4</sub>"

20<sup>1</sup>/<sub>2</sub>"

35<sup>1</sup>/<sub>2</sub>"

0.87

14.53

15 Lbs  
10.59 Cu Ft

\$ 580  
\$ 545

WOODS & FINISHES:

Natural Maple  
Standard



Natural Clear – M-NA

Maple Finishes  
The following stains are available, add 10% to list



Honey Oak – M-HO



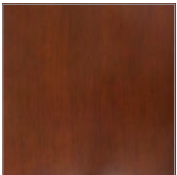
Castle Oak – M-CO



Richmond Cherry – M-RC



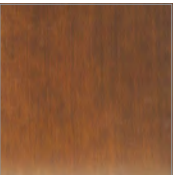
Mahogany – M-MA



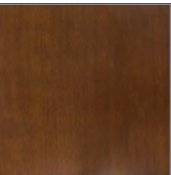
Victorian Cherry – M-VI



Java – M-JA



Wenge – M-WE



English Oak – M-EN

Natural Red Oak  
Standard



Natural Clear – O-NA

Red Oak Finishes  
The following stains are available, add 10% to list



Castle Oak – O-CO



Honey Oak – O-HO



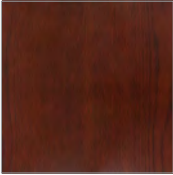
English Oak – O-EN



Victorian Cherry – O-VI



Mahogany – O-MA



Richmond Cherry – O-RC

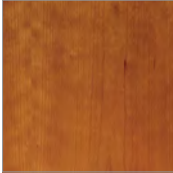


Java – O-JA



Wenge – O-WE

Natural Cherry  
Add 20% to list



Natural Clear – C-NA

Cherry Finishes  
The following stains are available, add 30% to list



Honey Oak – C-HO



Richmond Cherry – C-RC

Natural Walnut  
Add 20% to list



Natural Clear – W-NA

Walnut Finishes  
The following stain is available, add 30% to list



Java – W-JA

HARDWOODS: All hardwood materials used in the manufacturing of seating products shall be Northern grown hardwoods. Hardwoods will be air and kiln dried to a moisture content of 5-7%. All hardwoods shall be of grade “A” material, free of material stains, imperfections, conformity of grain, texture and color. Hardwood species shall be Northern grown Red Oak, and Clear White Northern Maple.

FINISHING PROCEDURES: All materials shall be inspected and treated with a final sanding and polishing operation before any staining and final finishing can be performed. All machine and mill marks are to be removed. Once the polishing and sanding has been performed, the furniture will then undergo the following stain and finishing procedures:

Step 1: A base stain will be uniformly applied, wiped and then allowed to dry under factory controlled conditions.

Step 2: A uniform coat of sealer will be applied and allowed to dry.

Step 3: Sealer will be lightly sanded using 240 grit silicon paper.

Step 4: A catalytic lacquer of 34-45 degree sheen is evenly applied and allowed to dry under factory controlled conditions.

METAL FINISHING PROCEDURES: All metal components are thoroughly cleaned and coated electrostatically with an epoxy powder coat paint finish. The metal components are then oven baked and cured for a lasting finish.